
d a t a s a v e r

User's Guide

27 November 2006

datasaver and datasaver PRO

User's Guide

If you are:

an ordinary user using the DataSaver to protect your computer,
this User's Guide is for you.

trying to recover some files and folders you may have lost, or to
recover a crashed computer, please refer to the Recovery Guide.

an Administrator, managing the DataSaver for your users, please refer
to the Administrator's Guide.

For updates and additional information, please visit the DataSaver website at
<http://www.datasaver.biz>

The information contained in this document is subject to change without notice and does not represent a commitment on the part of Digital Artifact Pte. Ltd. The software described in this document is furnished under a license agreement or non-disclosure agreement. The software may be used or copied only in accordance with the terms of the license agreement.

This document is copyright material and may not be reproduced, copied or duplicated in any form in whole or in part without the prior written consent of Digital Artifact Pte. Ltd.

Document Version: 2.1 Build: 2006

Digital Artifact Pte. Ltd
1003 Bukit Merah Central, #05-30,
Bukit Merah Technopreneur Centre,
Singapore 159836
<http://www.digitalartifact.net>
support@digitalartifact.net

CONTENTS

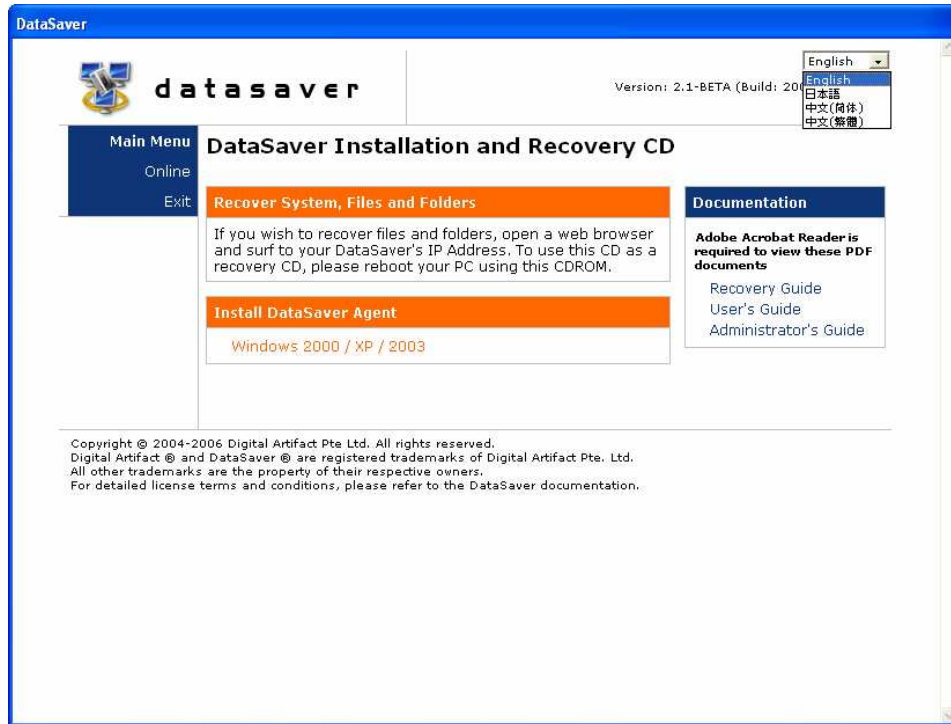
Part I:	DataSaver Agent Installation	4
Part II:	Introduction to DataSaver Agent Interface	8
Part III:	DataSaver Agent Configuration	13
Part IV:	Creating a New Base System Image	18
Part V:	Continuous Incremental Backup	20

PART I

DataSaver Agent Installation

Installing DataSaver Agent

Insert the DataSaver Installation and Recovery CD, and at popup window, double click on “Windows 2000 / XP / 2003” under Install DataSaver Agent. The DataSaver Agent Installer may also be downloaded from the DataSaver website – www.datasaver.biz/support

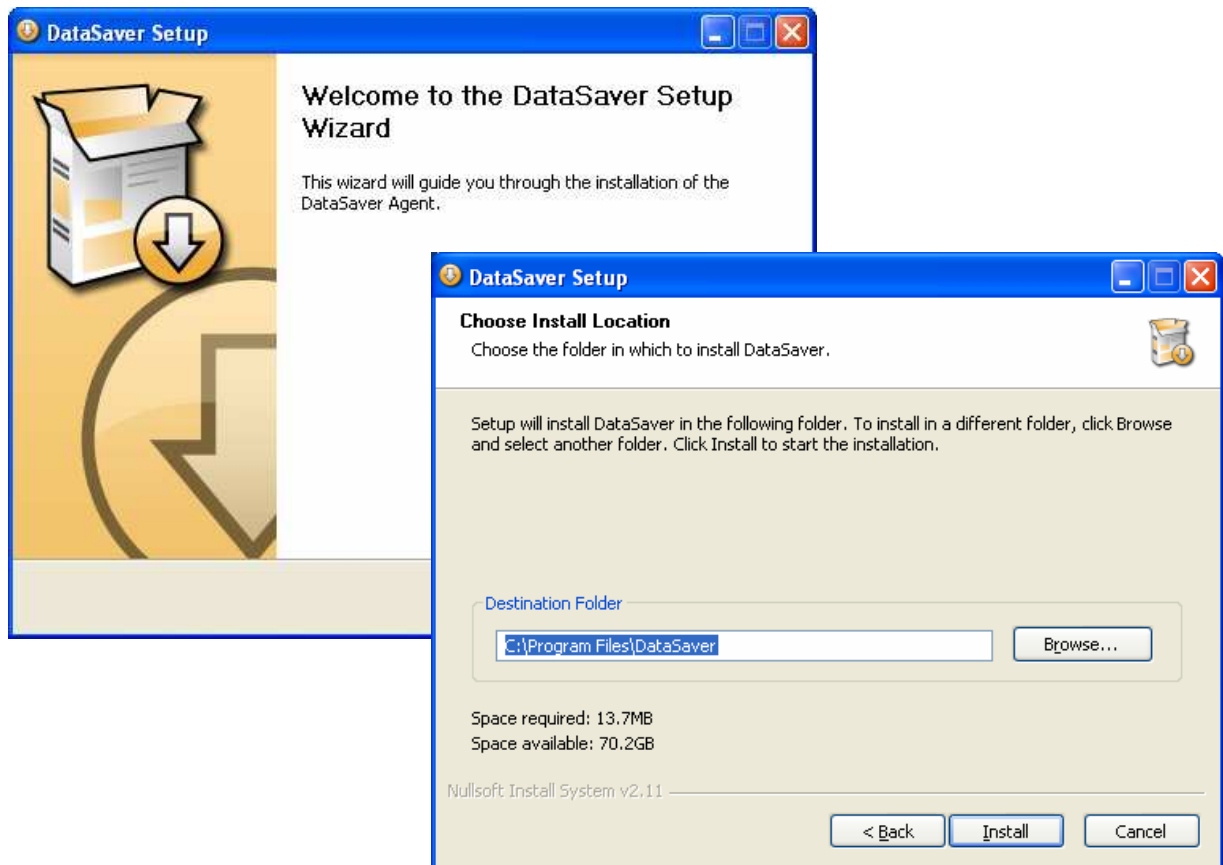


**DataSaver Agent program files (including docs) need about 20MB to install.
In addition, at least 500MB of disk space is needed for
DataSaver Agent cache (used for Continuous Incremental Backup).**

Select your Language preference for installation process.



Follow the on screen instructions and continue with the installation process.



The DataSaver Agent Installer will need to reboot to complete its installation process.



Remember to reboot your computer after installation completes.


Installation Notes:

- If you are using an anti-spyware program such as Microsoft Anti-spyware or Spybot, please allow the DataSaver Agent Installer to make the necessary changes in the registry.
- If you are using firewall software on your computer or a firewall appliance in your network, please open port 5450 to allow the DataSaver and DataSaver Agent to communicate with each other.

PART II

Introduction to the DataSaver Agent Interface

DataSaver Main Screen

Once the DataSaver Agent has been installed, the DataSaver Agent will automatically start when Windows boots. You will see a  icon appear in the taskbar or systray at the bottom right of the desktop.

Depending on the status of the DataSaver agent, the  icon may vary in color.



A purple icon indicates that DataSaver Agent is initializing and starting up.



A grey icon indicates one of the following statuses:

- Continuous Incremental Backup (CIB) is disabled and inactive.
- Base System Image (BSI) has not been created.
- DataSaver Agent has not been configured.

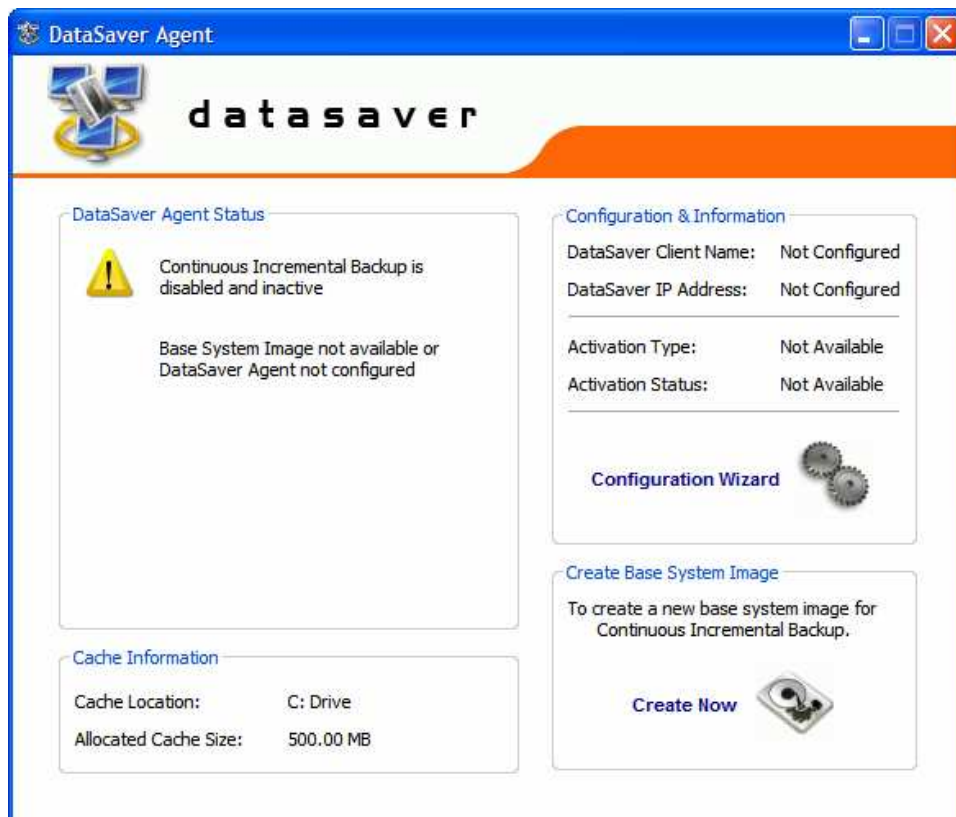
Your computer is not protected by the DataSaver.



An orange icon indicates that the Base System Image (BSI) has been created and Continuous Incremental Backup (CIB) is enabled and active.

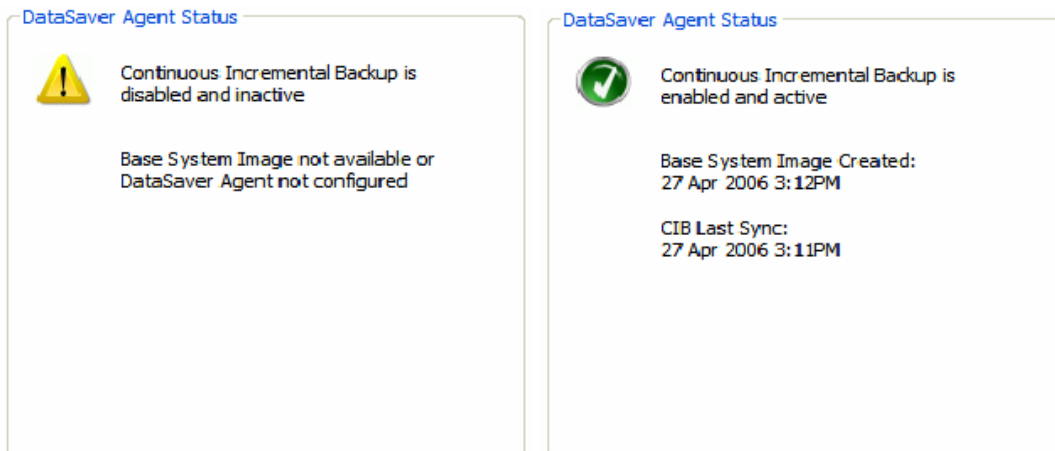
Your computer is protected by the DataSaver.

To launch main screen of the DataSaver Agent, click on the  icon.



System Summary Panel

DataSaver Agent Status Box

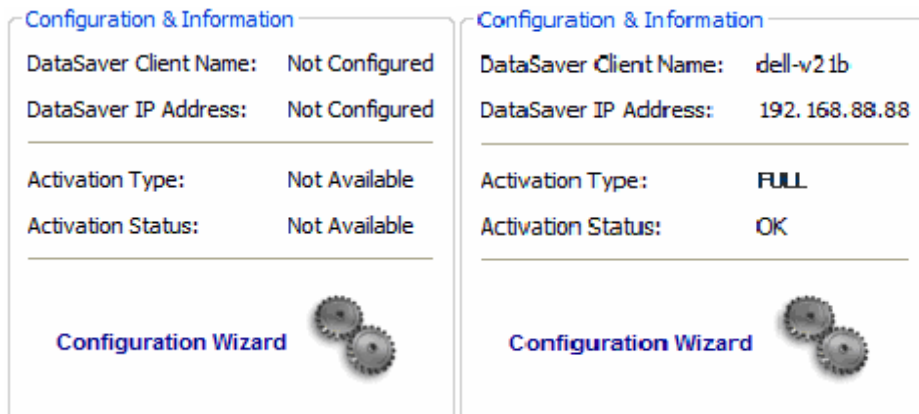


In the DataSaver Agent Status box, you will be able to obtain information on the following:

- Continuous Incremental Backup
- Base System Image
- CIB Last Sync

Based on the current status, different messages will appear in the status box.

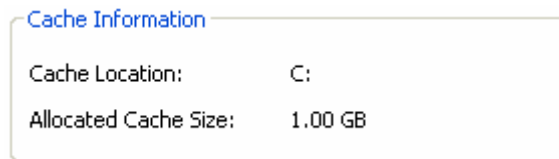
Configuration & Information Box



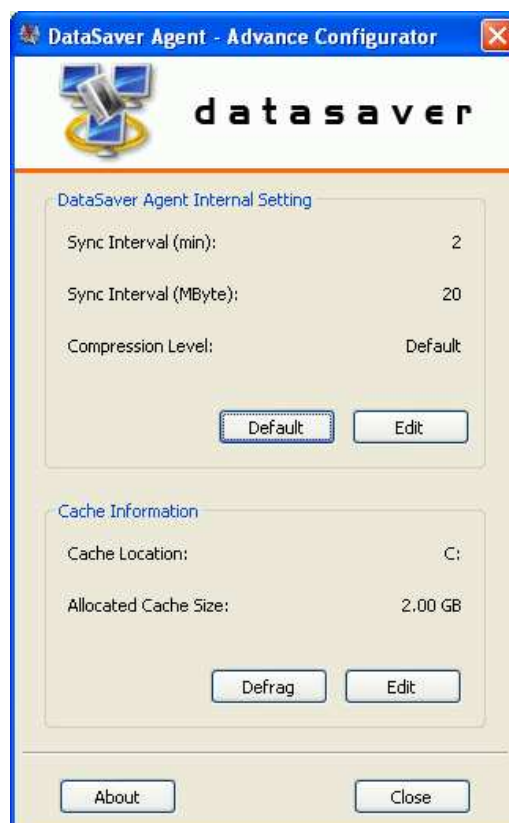
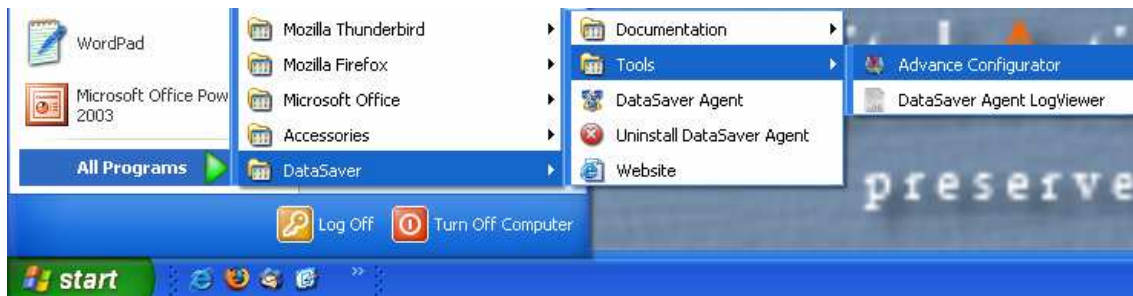
If you have configured the DataSaver Agent, both DataSaver IP address and your Client Name will be reflected in the Configuration & Information Box. If they show “Not Configured”, please run the Configuration Wizard.

The Activation Type and Status of your DataSaver will also be reflected in the Configuration & Information Box.

Cache Information



Your computer's cache location and size will be reflection in the Cache Information box. The cache allocation is required for Continuous Incremental Backup (CIB) to function. In the event if the cache information shows UNKNOWN or if you wish to increase the cache size, you may access the Advance Configurator to set up the required allocation. The default allocated cache size is 1GB.




You will need to reboot you computer for the cache changes to take effect.

If your files are too fragmented, it will cause BSI to fail. Click on the **Defrag** button to initiate the de-fragment process of your hard disk.

We recommend that you “De-fragment” your hard disk before performing BSI.

Create Base System Image Box




Before Continuous Incremental Backup (CIB) can function, a Base System Image (BSI) has to be created. To create a Base System Image (BSI), click on the **Create Now**  icon.

Remember to configure or setup the DataSaver Agent before creating a Base System Image (BSI). Run Configuration Wizard to setup DataSaver agent.

PART III

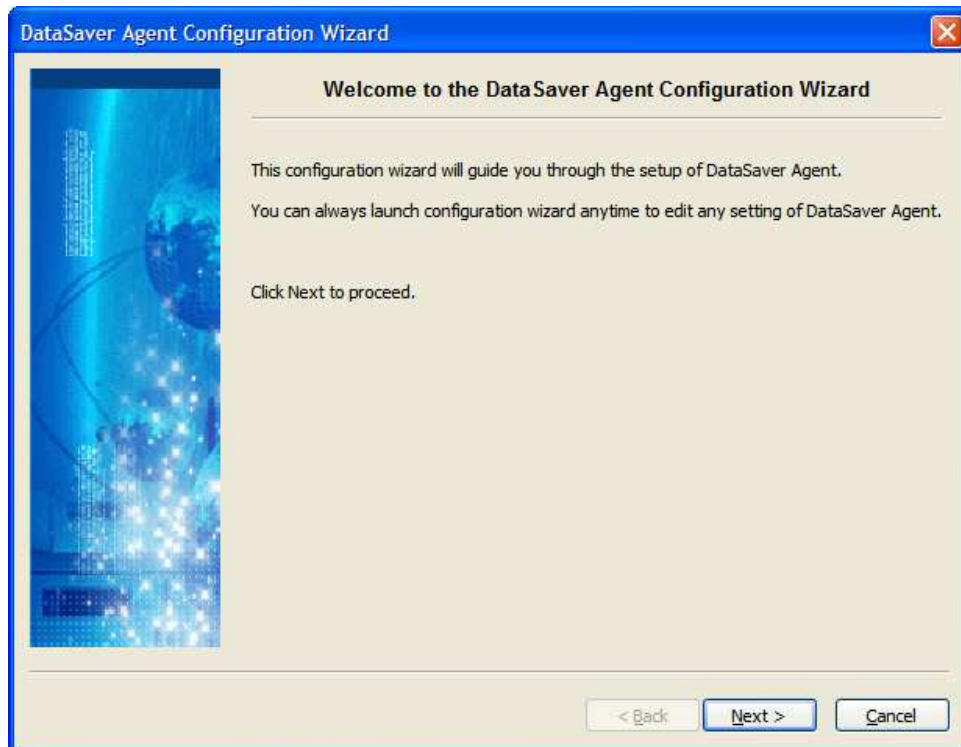
DataSaver Agent Configuration

Running the Configuration Wizard

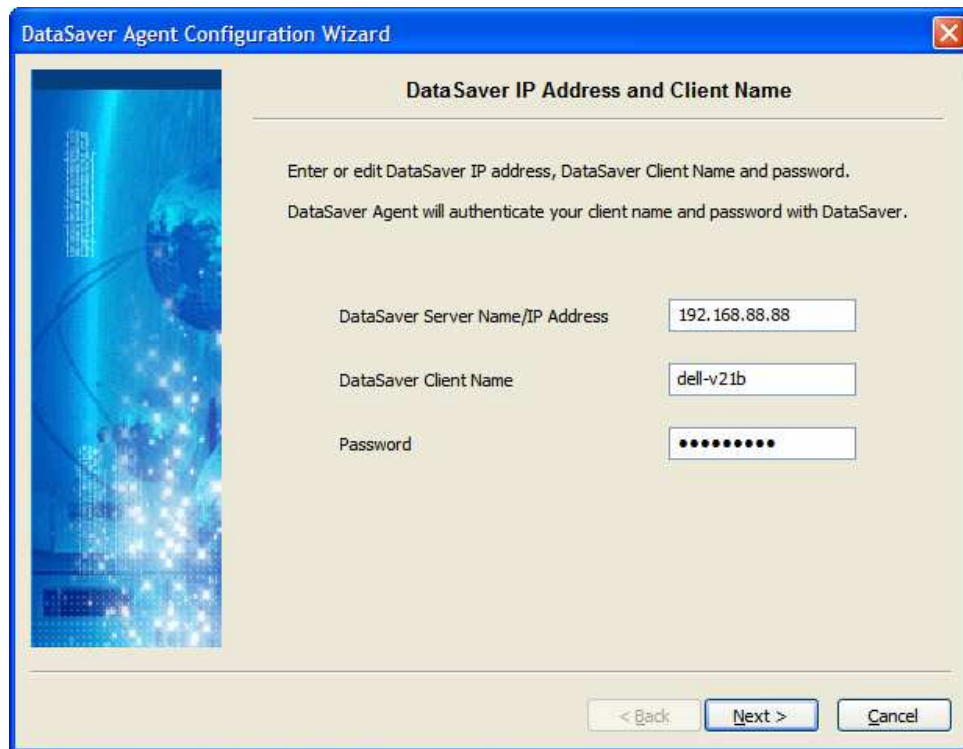
To setup or configure the DataSaver Agent, click on the **Configuration Wizard**  icon on the main menu.

Before running the Configuration Wizard, make sure your Administrator has assigned or created a DataSaver client account and password for you.

Click **Next** on the Wizard welcome screen and follow the on screen instructions.



Enter the DataSaver IP address, Client Name and password.

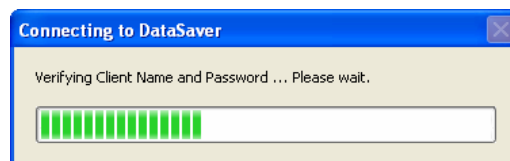


The image shows a Windows-style dialog box titled "DataSaver Agent Configuration Wizard". The main heading is "DataSaver IP Address and Client Name". Below the heading, there is instructional text: "Enter or edit DataSaver IP address, DataSaver Client Name and password. DataSaver Agent will authenticate your client name and password with DataSaver." There are three input fields: "DataSaver Server Name/IP Address" with the value "192.168.88.88", "DataSaver Client Name" with the value "dell-v21b", and "Password" which is masked with dots. At the bottom right, there are three buttons: "< Back", "Next >", and "Cancel".

If you are unsure about your DataSaver IP address, Client Name or password, please contact your Administrator.

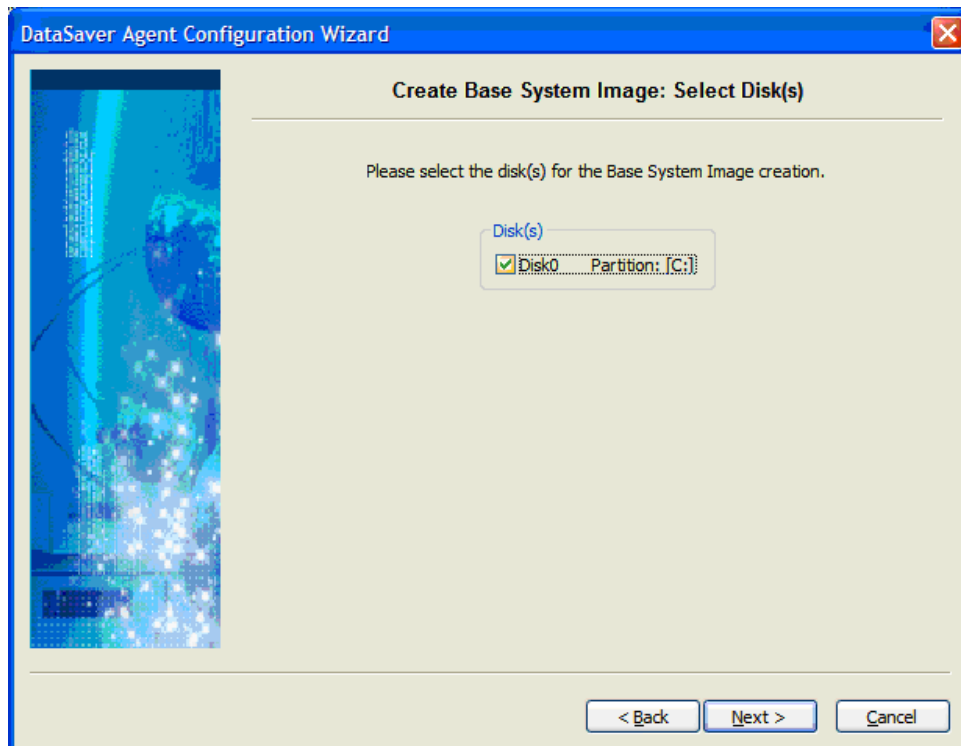
Remember, Client Passwords are case sensitive.

Click **Next** and DataSaver Agent will verify your Client Name and password with the DataSaver.



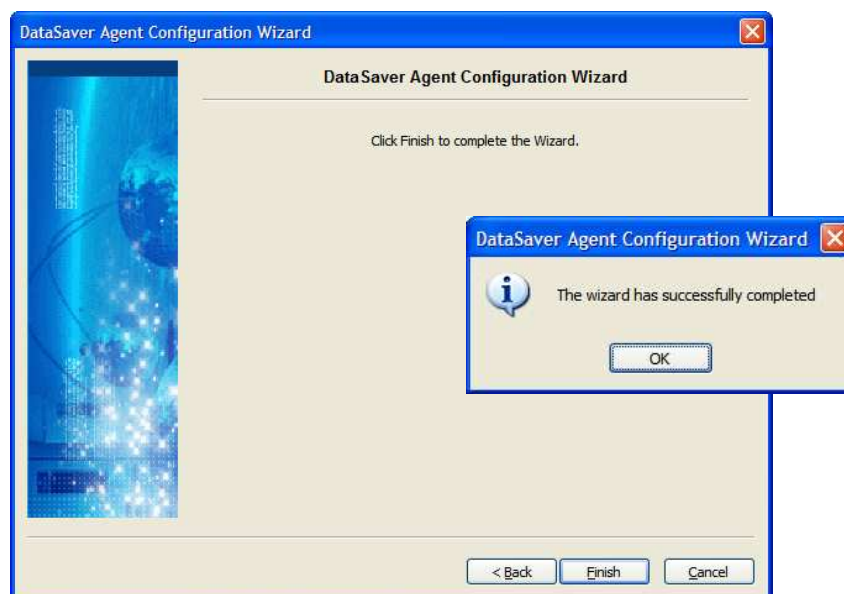
If the verification fails, please check that you have entered the correct Client Name, password and DataSaver IP address. If the above entries are correct, check your network connection and that the DataSaver is powered on.

Choose the disk or disk(s) to be used as part of your computer's Base System Image (BSI). The Base System Image (BSI) will be used as a reference for Continuous Incremental Backup (CIB). Click **Next** once you have chosen the disk(s) you wish to back up.




It is recommended to select and backup all disks.

Clicking **Next** will bring you to the last page of the wizard, following which, click **Finish** to complete the wizard.



Once your DataSaver Agent configuration is completed, you will be asked if you like to create the Base System Image (BSI).



- **Yes** – This will immediately start creating the Base System Image (BSI) right after you have completed the Configuration Wizard.
- **No** – If this option is chosen, you can create the Base System Image at a later time by clicking the **Create Now**  icon.

(See “Part IV: Creating a New Base System Image” in this User’s Guide)


If you have chosen to create Base System Image after Wizard, Base System Image creation process will begin immediately.

A progress bar will slide up at the bottom right of the desktop.

PART IV

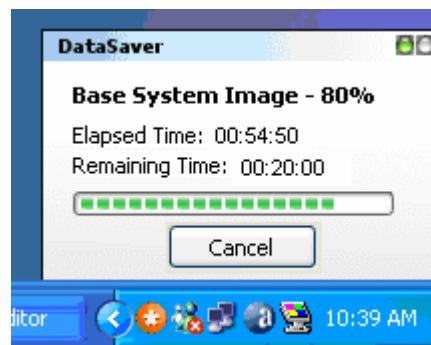
Creating a New Base System Image

Base System Image Creation

At any point in time, a new Base System Image (BSI) can be created after DataSaver Agent has been configured. To do so, launch the DataSaver Agent and click on  under the System Summary Panel.



A progress bar will slide up at the bottom right of the desktop indicating the start of Base System Image (BSI) creation.



Every time a new Base System Image is successfully created, the DataSaver will automatically create a Recovery Point based on this Base System Image. This is done by taking a snapshot of your Base System Image (BSI). Subsequent Recovery Point snapshots may be performed manually or by setting a schedule on the DataSaver.

To schedule Recovery Point snapshots of your Base System Image (BSI), please contact your Administrator. As a user, you can login to your account on DataSaver and manually perform a snapshot. Please refer to the Recovery Guide for more information.

The Base System Image (BSI) creation may be stopped by clicking on the **Cancel** button on the progress bar.

If the Base System Image (BSI) should for any reason fail to complete, it may be a good idea to reboot the computer before creating a BSI again.

If you have cancelled the Base System Image creation, Continuous Incremental Backup will not be enabled and it will be inactive until a new Base System Image is created.

It is recommended to create a new Base System Image every one or two months. This will ensure that Continuous Incremental Backup is based on the most recently created Base System Image.

PART V

Continuous Incremental Backup

What is Continuous Incremental Backup?

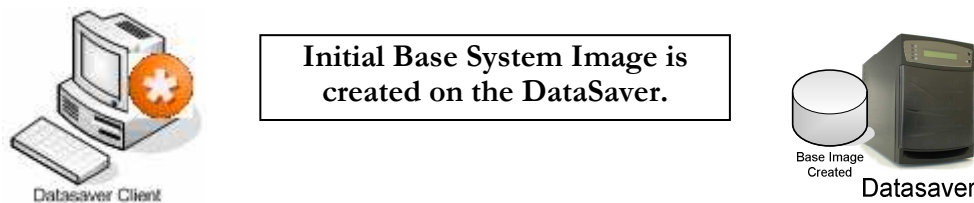
In order for Continuous Incremental Backup (CIB) to run, you must create a Base System Image (BSI) first. The DataSaver will then use the Base System Image (BSI) as a reference point to compare and monitor changes made to your computer. All changes made will be transmitted, synchronized and automatically merged into the Base System Image (BSI).

This process is run continuously and will ensure that the Base System Image (BSI) in the DataSaver is always up to date and in sync with your computer. The DataSaver can then take a snapshot of the Base System Image (BSI) and create a Recovery Point to allow you to perform recovery of individual files and folders, or an entire system. Continuous Incremental Backup (CIB) also conserves network bandwidth by transmitting only incremental changes between your computer and the DataSaver.

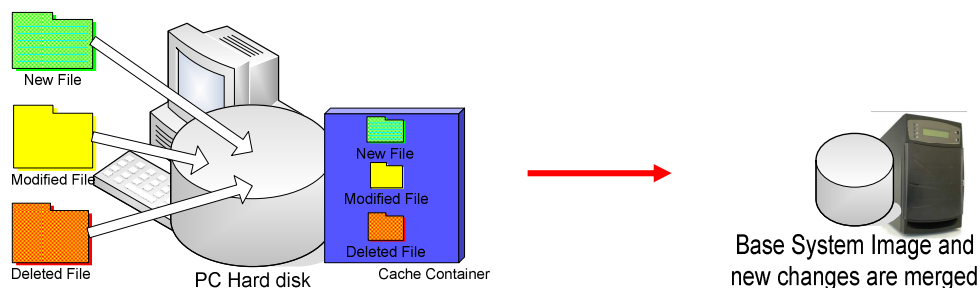
If however, during Continuous Incremental Backup (CIB), the DataSaver Agent is unable to communicate with the DataSaver for any reason, including lack of network connectivity, the DataSaver agent will then cache all the changes detected and transmit them once the connection to the DataSaver is restored. Continuous Incremental Backup will automatically resume after system shutdown and reboot.

Simple illustration of Continuous Incremental Backup


Firstly, a Base System Image (BSI) is created on the DataSaver.

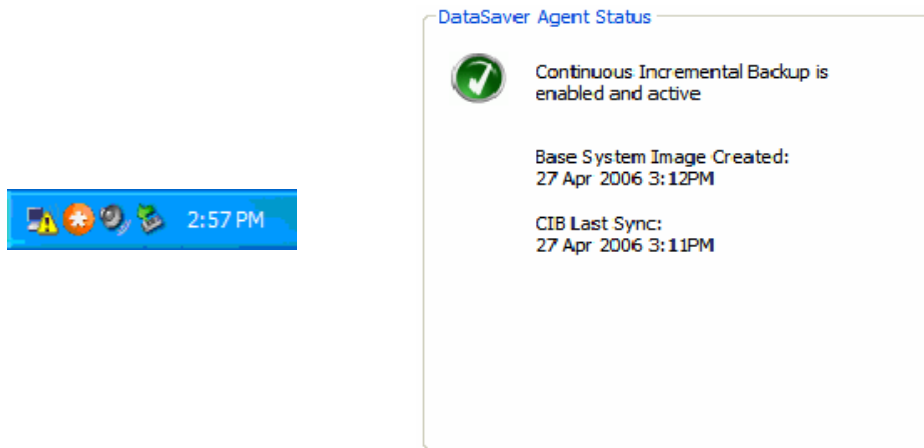



From this point onwards, the DataSaver Agent monitors any changes that are made to the computer. Once a change has been detected, these changes will be transmitted to the DataSaver and automatically merged with the Base System Image.

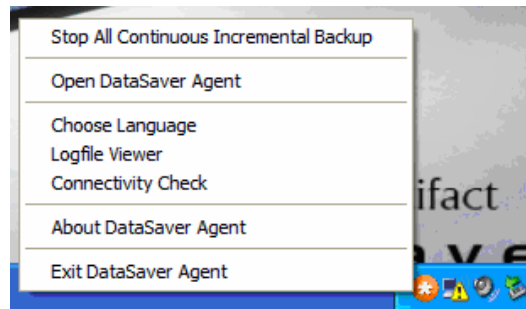


Stopping Continuous Incremental Backup

Active Continuous Incremental Backup (CIB) is indicated by the orange  icon in the systray or in the Continuous Incremental Backup Status Box under System Summary Panel in DataSaver Agent.



To completely stop Continuous Incremental Backup (CIB) on your computer, right click on the  icon in the systray and click on **Stop All Continuous Incremental Backup**.



Once Continuous Incremental Backup has been stopped, you will need to create a new Base System Image to re-activate Continuous Incremental Backup.

Digital Artifact

preserve

Digital artifacts are things created by people in digital form that are of interest and value. We produce solutions to conserve these digital artifacts, preserving life, knowledge and enterprise.

Digital Artifact ® and DataSaver ® are registered trademarks of Digital Artifact Pte. Ltd.
All other trademarks are the property of their respective owners.
Copyright © 2004-2006 Digital Artifact Pte. Ltd. All rights reserved.